

Los Angeles Community Eruv

LA ERUV
PUT THE UNITY
IN
COMMUNITY



By the Community,
For the Community.

Tax ID: 95-3287926

By the Community, For the Community.

ABOUT THE ERUV

The Los Angeles Community Eruv (LA ERUV) was built to enhance the experience of Shabbos in Los Angeles. It facilitates broader access to shul, community, and to extended family. Our eruv facilitates inclusion of the young and elderly in Shabbos programming, simchas, meals and the overall community. Our LA ERUV is one of the few institutions that serves our city's entire Shabbos-observant community, and makes our neighborhoods an option for young families. We are grateful to have support from a wide spectrum of shuls throughout the city.



The LA ERUV is the largest eruv in the United States at over 100 square miles and may be the largest in the world.

Despite the size of the eruv, it has only been down twice since it was erected in 2002.

The LA ERUV extends to the east to include Hancock Park and its neighboring communities of Fairfax, Miracle Mile, and West Hollywood. It also expands westward to include Beverly Hills, Pico, Beverlywood, Westwood, Beverly Glen, Bel Air, and all neighborhoods east of the 405 from the 10 Freeway to the Ventura/Hollywood Freeways. It also reaches north to the 101 Freeway to include the Hollywood Hills, Studio City, and part of Sherman Oaks.

The LA ERUV is the largest eruv in the United States at over 100 square miles and may be the largest in the world. Despite the size of the eruv, it has only been down twice since it was erected in 2002.

The Rabbinical Council of California and the RCC Eruv Vaad Halacha certifies the validity and maintenance of the LA ERUV. The eruv incorporates the highest standards possible in a large metropolitan eruv, and has been recognized as one of best constructed and maintained eruvin in the world.



<https://rccvaad.org/la-eruv/>

Get Eruv Status Reports:



Subscribe to email status report: <http://www.laeruv.com/subscribe/>



Phone for current status: (877) Eruv-Info (877) 378-8463
3 7 8 8 4 6 3



Twitter: Follow https://twitter.com/LAeruv_status



Facebook: Join at <https://www.facebook.com/LosAngelesEruv/>



WhatsApp: Text *firstname lastname ERUV* to 424-772-3499



www.laeruv.com

info@laeruv.com

By the Community, For the Community.

FUNDING THE ERUV

The LA ERUV relies upon a cooperative effort of the community to fund its operations. Family dues cover about half of the annual budget of the LA ERUV. Eruv Dues this year are \$100 per member family.

We are counting on you, the community, to raise the balance of our annual budget as part of our Annual ERUV SHABBOS APPEAL.

Please make a commitment to support the LA ERUV. If you are having a Simcha, or want to honor a loved one, sponsor a week of the LA ERUV for just \$250. We accept payment via check, credit card, or PayPal. You can login to LAERUV.com to make a donation today.

The City of Los Angeles, due to its large population and the traffic patterns of major streets, requires a much more complex and exacting design and construction management than most other major cities. The LA ERUV uses the construction of solid walls enclosing the vast majority of the area within its perimeter. This raises our eruv to a much higher halachic standard, but requires a considerable amount of actual construction and physical infrastructure throughout the city. Our eruv uses miles of solid walls and installed fences, adapters, lines and poles.

The City of Los Angeles, due to its large population and the traffic patterns of major streets, requires a much more complex and exacting eruv design and construction management than most other eruvim.

The LA ERUV uses the construction of solid walls enclosing the area within its perimeter, raising our eruv to a much higher halachic standard.

The LA ERUV annual operating budget is about \$120,000 per year. The largest share of the budget is used to pay our team including our repair crew who spend hours every Thursday night and often Friday making repairs, as well as our crew of rabbinical inspectors with drivers who check the eruv every week. About a third of the budget is used to pay for materials (such as poles, fencing, connectors, etc.), outside labor (such as construction workers, fence installers, sign companies, tree removal, etc.), and maintenance and repairs for our dedicated lift truck.

The remainder of the budget is used to pay for insurance (for CalTrans, D&O liability insurance, auto insurance, etc.) and administrative expenses.

**PLEASE SUPPORT
YOUR COMMUNITY ERUV!**

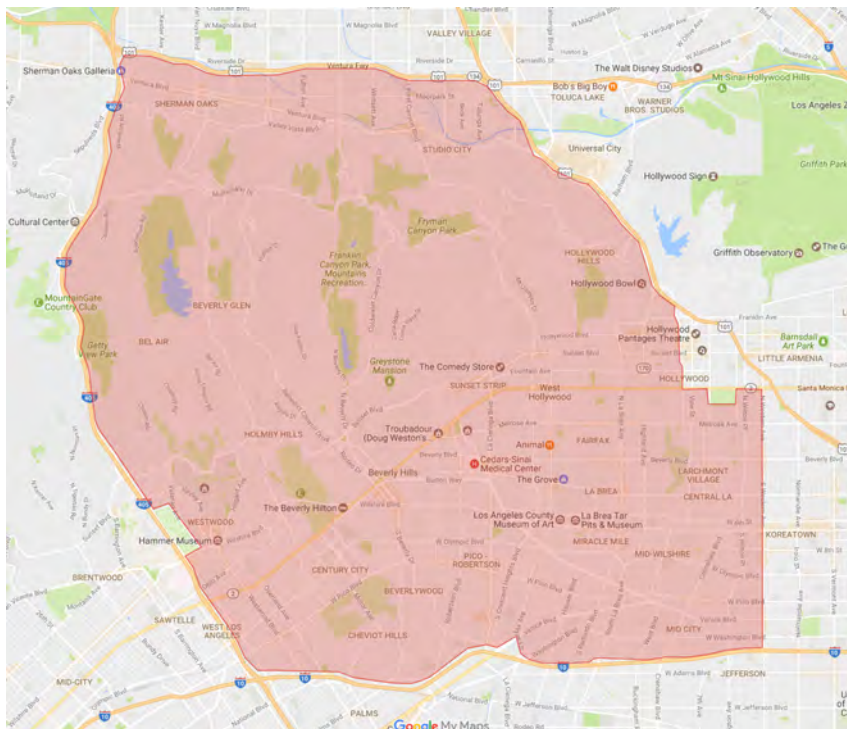


www.laeruv.com

info@laeruv.com

By the Community, For the Community.

LA ERUV BOUNDARIES



The LA ERUV boundary (southeast corner) begins at the corner of the 10 Freeway and Western Avenue, continues north on Western Avenue to Santa Monica Blvd., turns west on Santa Monica Blvd. to Caheuenga Blvd, and then continues north to the 101 Freeway. The eruv boundary continues northwest on the south side of the 101 Freeway to the 405 Freeway, continues south on the east side of the 405 Freeway to the 10 Freeway, and continues east on the north side of the 10 Freeway to Western Avenue. The exact path is subject to change as we continually adjust to construction projects and other issues.



www.laeruv.com

info@laeruv.com

By the Community, For the Community.

USING AN ERUV

Many people make the mistake of assuming that an eruv creates permission to carry any object on Shabbos. An eruv is not a legal fiction, nor is it a workaround to allow the performance of the otherwise forbidden malacha of "Carrying". The concept of eruv is part and parcel of the halachos of Shabbos, and permits carrying only within narrow constraints.

Common articles that are permitted to be used or carried within an eruv on Shabbos include:

- Baby carriages and strollers.
- Canes, walkers and wheelchairs.
- Food, medicine.
- Handkerchiefs, gloves and rain hats, house keys.
- Siddur or sefer.

You should never assume that the eruv is "UP" for Shabbos.

You are required to take personal responsibility to check the eruv status before each Shabbos.

An eruv does not lend permission to carry any "muktzah" article. Some of the more common items that are **not permitted** to be carried include:

- Any item which has no Shabbos functional use such as stones & credit cards.
- Any item of great value which you would be very careful to protect such as passports, checks and other expensive items.
- Any item which cannot be used on Shabbos or whose intended use is for after Shabbos such as car keys or an umbrella.
- Bicycles and roller skates.

The eruv was built to enhance the experience of Shabbos, offering more togetherness, better access to shul, and additional options for the young and elderly. In order to use the eruv properly, we should remind ourselves as to what the Shabbos experience means.

You should never assume that the eruv is "UP" for Shabbos. You are required to take personal responsibility to check the eruv status before each Shabbos. You can check the **LAERUV.com** website, call **877-Eruv-Info**, sign up for the **email blast**, join our **WhatsApp** group, check **Facebook** or **Twitter**, or call a friend.

An eruv is a true blessing, and even a necessity for a community, but it shouldn't be treated lightly or lead you to forget that it is Shabbos. You should discuss with your own Rav the parameters of when and how to use the eruv.



www.laeruv.com

info@laeruv.com

By the Community, For the Community.

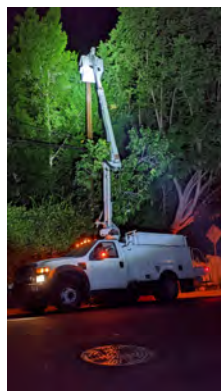
MAINTAINING AN ERUV

Maintaining an Eruv is a delicate balance between permanence and flexibility. On the one hand, we need a perimeter that will last for decades, but it also needs to be able to change and adjust weekly with enough "give" that it can be adjusted on minimal notice week by week in response to the changing environment.



The LA Eruv grew from the original Beverly Hills Eruv that was created 50 years ago by Beth Jacob Congregation. We remain grateful for their pioneering efforts in building Jewish communal infrastructure in Los Angeles. The Eruv went live in its current form in 2001, and has been up for almost 1150 weeks. In those 22+ years we have only been down two weeks. For the past several years, our crews also support and repair the West Valley Eruv.

Building and maintaining the LA Eruv is a constant tug-of-war between permanence and adaptability. We need the eruv to be reliable for decades and we need to be able make changes almost without notice.



www.laeruv.com

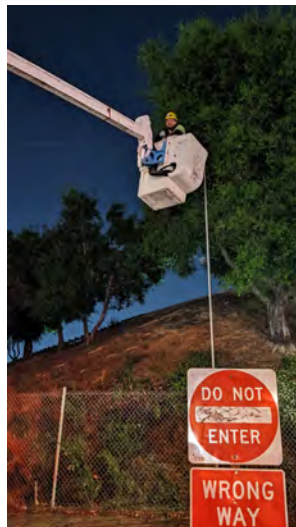
info@laeruv.com

By the Community, For the Community.

MAINTAINING AN ERUV, continued

Living in a city with an eruv lets us all enjoy the luxury of getting out on Shabbos to attend shul, visit friends, hear a shiur or learn with a chavrusa. Families can push a stroller or a wheelchair, and people can carry medical supplies or other necessities that allow them to be included in the richness of Shabbos life here in Los Angeles.

Our LA Eruv is surrounded by walls on three and a half sides. We use freeway fences, sound walls, railway fences, concrete barriers, wildlife fences through the Sepulveda Pass and other solid walls. On the Eastern side, we track down city streets using 200 pound test mono-filament line from pole top to pole top. Where our eruv crosses over streets, on-ramps, off-ramps, alleys, sidewalks, even stairways and bridges around the city, we connect every gap. Nowhere in the 45-mile perimeter of our eruv is there a gap or break of more than inches. On many of those poles we connect using custom adapters that we designed and created, which are now in use on Eruvin throughout the country.



The LA Eruv has become a model for cities all over the western United States.



www.laeruv.com

info@laeruv.com

By the Community, For the Community.

MAINTAINING AN ERUV, continued

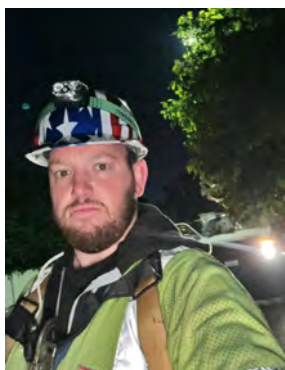
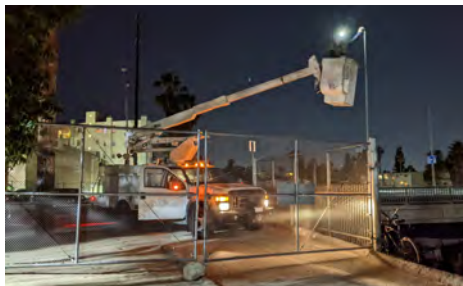
Our eruv ties our solid wall segments together into a continuous boundary around our community.

The LA Eruv rabbinic supervisors check the eruv weekly without fail. We

have a pair of rabbis, expert in both the Halacha and the practical mechanics of building an eruv, who divide the eruv up and check the full perimeter every week. We also have a second crew that spends Sunday mornings walking the eruv boundaries along the freeway fences and soundwalls confirming that there are no new problems in out of the way places.

Throughout the eruv, connections and lines are checked to verify that they attach to poles and walls and other structures properly, that the lines and fences and walls are in good condition.

Our current eruv team includes a team of rabbinical experts who inspect every eruv line and connection every week.



www.laeruv.com

info@laeruv.com

By the Community, For the Community.

MAINTAINING AN ERUV, continued

Lines are never allowed to brush against or rest on other lines, poles, trees, bushes or other obstructions. To keep them clear, our guys spend hundreds of hours each year in our cherry picker bucket truck trimming back trees and bushes to keep them clear of our eruv lines.



Throughout our construction of the eruv, we work to incorporate the most stringent Halachic opinions and requirements. Our rabbis are out week by week, year by year guaranteeing that no lines are broken, no fences are lifted, cut or bent. Every week, they catalog any deficiencies.

Since Rosh Hashanah 2002, the LA Eruv has been up for over 1100 weeks and been down only twice. Not bad.

Each Thursday night, while you are prepping for Shabbos, our team is as well. Our crew picks up our bucket truck and heads out into the night with a list of fixes, changes, reroutes, dangling branches and other issues. As they work through location after location, they negotiate freeway traffic, homeless encampments, bad weather and general Los Angeles craziness through the night into the early hours to make each repair required by the rabbinic crew. When each repair has been completed, the crew checks in with the head mashgiach.

They discuss the repairs made, swap photos as needed until the mashgiach is satisfied. Then the Mashgiach will declare the Eruv is UP. and the word goes out by phone, by email, by website and even by the social media platforms WhatsApp, Twitter (X), and Facebook.

The eruv is up and the city is ready for Shabbos.



www.laeruv.com

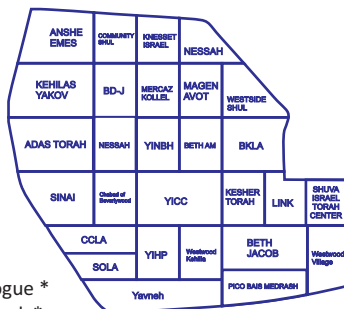
info@laeruv.com

By the Community, For the Community.

Shul Partners

Adas Torah *
 Beis Knesses of Los Angeles
 B'nai David-Judea Cong. *
 Chabad of Beverlywood
 Community Shul *
 Kehillat & Yeshivat Yavneh*
 LINK Kollel & Shul *
 Nessah
 Beth Am *
 Shuva Israel Torah Center
 Westwood Kehilla *
 Young Israel of Century City *
 Young Israel of North Beverly Hills *

Anshe Emes Synagogue *
 Beth Jacob Cong.*
 CCLA
 Chabad of SOLA
 Sinai
 Cong. Kehilas Yaakov *
 Keshet Torah
 Kollel Merkaz HaTorah
 Pico Bais Medrash
 Magen Avot
 The Westside Shul
 Westwood Village Synagogue *
 Young Israel of Hancock Park *



* Contributes through dues or direct funding

Builders & Pillars

We thank the more than 300 families who contributed to the LA Eruv last year (especially those who gave monthly automatic donations) including the following:

- | | | | | |
|-------------|----------------|-----------|-------------|--------------|
| Abraham | Benyowitz | Celnik | Fenig | Gorman |
| Abramowitz | Berger | Cofsky | Fenigstein | Govlich |
| Acosta | Berlin | Cohen | Finkelstein | Grabie |
| Adison | Berman | Cooper | Fisch | Gradon |
| Adler | Bezdrovny | Daneshrad | Fishman | Grawitzky |
| Agress | Bina | Davis | Fleischmann | Greenbaum |
| Akhamzadeh | Biron | Denbo | Flores | Greenberg |
| Alyeshmerni | Blaker | Diamand | Forer | Greenstein |
| Amiri | Blauner | Drizin | Frankel | Gross |
| Amster | Blitzstein | Eisenberg | Fried | Gruen |
| Anziska | Blumofe | Elterman | Friedman | Gruenbaum |
| Astrof | Bodumin | Engel | Fusion | Grunfeld |
| Atlas | Bonert | Etshalom | Geiger | Hahn |
| Aufrichtig | Bornstein | Ettlinger | Ghods | Haller |
| Bader | Broner | Evensky | Glazer | Halwani |
| Baitelman | Brown | Faber | Gofman | Hanasabzadeh |
| Barkhordar | Brull | Fain | Goldberg | Hantman |
| Baum | Buchman | Fauman | Golderg | Haridim |
| Beltran | Burg | Favian | Goldin | Hecht |
| Bemel | Casper | Fax | Goldman | Heller |
| Benchimol | Castell de Oro | Faynerman | Goldstein | Hendeles |
| Benjamin | Cavalier | Feldman | Gordon | Henkin |



www.laeruv.com

info@laeruv.com

By the Community, For the Community.

Builders & Pillars, continued

Hepner	Lebovics	Nitzani	Schuman	Teller	Zilkha
Hirschmann	Lee	Normand	Sedighpour	Tendler	Zirdok
Hoffman	Lent	Novak	Segura	Thompson	Zutler
Hofstatter	Lerer	Ohsie	Seidler-Feller	Topiol	
Homami	Lester	Olkha	Shahrouz	Trapp	
Huttler	Leventhal	Pariser	Shallman	Tsitsuashvili	
Iltis	Levin	Partush	Shanblatt	Turk	
Inselmann	Levine	Pesso	Shapiro	Twersky	
Isaacs	Lewis	Piliavin	Shenker	Union	
Isenberg	Light	Pollack	Sher	Uretsky	
Ives	Lisker	Prince	Shink	Wachtel	
Jacobs	Litenatsky	Quinn	Shofet	Waghalter	
Jacobson	Litvak	Rauch	Shvartsman	Weber	
Jaeger	Loewenstein	Rbibo	Shwartz	Weinberg	
Jakubovitz	Magid	Reichman	Siegal	Weiner	
JDM Funding	Mahpour	Richards	Silverman	Weinman	
Johnson	Malk	Richeimer	Silverstein	Weinstein	
Kahn	Mankowitz	Rohatiner	Simon	Weiskopf	
Kanefsky	Mann	Romm	Simpson	Weiss	
Kapenstein	Marciano	Rosen	Smith	Weissman	
Kaplan	Margules	Rosenbaum	Sobel	Wertheimer	
Karesky	Mark	Rosenberg	Socher	Western Institute	
Katyal	Markman	Rosenblatt	Soussana	Weyuker	
Katz	Marmon	Rosenthal	Spinrad	Wiener	
Katzovitz	Mayesh	Ross	Stauber	Wilk	
Kaufmann	Meier	Rothman	Stein	Williams	
Keiter	Melmed	Rothstein	Stern	Willner	
Kest	Menlo	Roz	Stewart	Winkler	
Kirschenbaum	Menter	Rubin	Stohl	Wintner	
Kishineff	Merewitz	Ryzman	Stolz	Wisnicki	
Klein	Miller	Sacks	Storch	Witkin	
Kleinman	Milstein	Saks	Stuhl	Wolmark	
Kohanoff	Mindle	Saltiel	Stul	Wurzburger	
Kopple	Modlinger	Samson	Subar	Yellen	
Korobkin	Mollaei	Sanders	Sufrin	Yellin	
Kramer	Montag	Scheinfeld	Sullivan	Zakowski	
Krell	Morris	Schiffman	Tabacznik	Zargari	
Krich	Muskin	Schlussel	Tabaroki	Zeitlin	
Krief	Nagel	Schmeidler	Tabrikian	Zelkha	
Krombach	Newman	Schneider	Tamir	Zeltzer	
Landa	Nissimtlar	Schoenfeld	Teichman	Zemel	

Sign up for a monthly support of the ervuv at: www.laervuv.com/donate



www.laervuv.com

info@laervuv.com



Los Angeles Community Eruv
1120 S Robertson Blvd, Suite 300
Los Angeles, CA 90035

www.laeruv.com