

Los Angeles Community Eruv

LA ERUV
UNITY
IN
COMMUNITY



By the Community,
For the Community.

Tax ID: 95-3287926

By the Community, For the Community.

ABOUT THE ERUV

The Los Angeles Community Eruv (LA ERUV) was built to enhance the experience of Shabbos in Los Angeles. It facilitates broader access to shul, community, and to extended family. Our eruv facilitates inclusion of the young and elderly in Shabbos programming, simchas, meals and the overall community. Our LA ERUV is one of the few institutions that serves our city's entire Shabbos-observant community, and makes our neighborhoods an option for young families. We are grateful to have support from a wide spectrum of shuls throughout the city.



The LA ERUV extends to the east to include Hancock Park and its neighboring communities of Fairfax, Miracle Mile, and West Hollywood. It also expands westward to include Beverly Hills, Pico, Beverlywood, Westwood, Beverly Glen, Bel Air, and all neighborhoods east of the 405 from the 10 Freeway to the Ventura/Hollywood Freeways. It also reaches north to the 101 Freeway to include the Hollywood Hills, Studio City, and part of Sherman Oaks.

The LA ERUV is the largest eruv in the United States at over 100 square miles and may be the largest in the world. Despite the size of the eruv, it has only been down twice since it was erected in 2002.

The Rabbinical Council of California and the RCC Eruv Vaad Halacha certifies the validity and maintenance of the LA ERUV. The eruv incorporates the highest standards possible in a large metropolitan eruv, and has been recognized as one of best constructed and maintained eruvim in the world.

The LA ERUV is the largest eruv in the United States at over 100 square miles and may be the largest in the world.

Despite the size of the eruv, it has only been down twice since it was erected in 2002.



<https://rccvaad.org/la-eruv/>

Get Eruv Status Reports:



Subscribe to email status report: <http://www.laeruv.com/subscribe/>



Phone for current status: (877) Eruv-Info (877) 378-8463
3 7 8 8 4 6 3



Twitter: Follow https://twitter.com/LAEruv_status



Facebook: Join at <https://www.facebook.com/LosAngelesEruv/>



WhatsApp: Text **firstname lastname ERUV** to 424-772-3499



www.laeruv.com

info@laeruv.com

By the Community, For the Community.

FUNDING THE ERUV

The LA ERUV relies upon a cooperative effort of the community to fund its operations. Family dues cover about half of the annual budget of the LA ERUV. Each shul chooses the way that works best for them to partner with the LA ERUV. Eruv Dues this year are \$54 per member family, and others make a contribution from their discretionary funds.

We are counting on you, the community, to raise the balance of our annual budget as part of our Annual ERUV SHABBOS APPEAL.

Please make a commitment to support the LA ERUV. If you are having a Simcha, or want to honor a loved one, sponsor a week of the LA ERUV for just \$250. We accept payment via check, credit card, or PayPal. You can login to LAERUV.com to make a donation today.

The City of Los Angeles, due to its large population and the traffic patterns of major streets, requires a much more complex and exacting design and construction management than most other eruvim. The LA ERUV is based on a set of halachic principles which raise our eruv to a much higher standard, requiring a considerable amount of actual construction and physical infrastructure throughout the city. Our eruv uses miles of solid walls and installed fences, adapters, lines and poles.

The City of Los Angeles, due to its large population and the traffic patterns of major streets, requires a much more complex and exacting eruv design and construction management than most other eruvim.

The LA ERUV is based on a set of halachic principles which raise our eruv to a much higher standard.

The LA ERUV annual operating budget is about \$120,000 per year. The largest share of the budget is used to pay our team including our repair crew who spend hours every Thursday night and often Friday making repairs, as well as our crew of rabbinical inspectors with drivers who check the eruv every week. About a third of the budget is used to pay for materials (such as poles, fencing, connectors, etc.), outside labor (such as construction workers, fence installers, sign companies, tree removal, etc.), and maintenance and repairs for our dedicated lift truck.

The remainder of the budget is used to pay for insurance (for CalTrans, D&O liability insurance, auto insurance, etc.) and administrative expenses.

**PLEASE SUPPORT
YOUR COMMUNITY ERUV!**

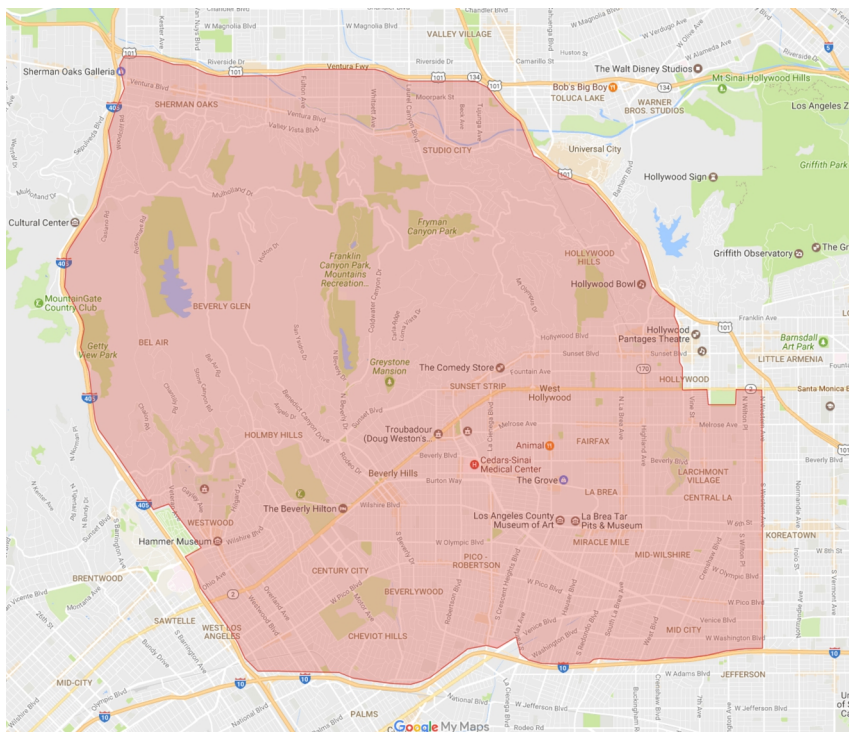


www.laeruv.com

info@laeruv.com

By the Community, For the Community.

LA ERUV BOUNDARIES



The LA ERUV boundary (southeast corner) begins at the corner of the 10 Freeway and Western Avenue, continues north on Western Avenue to Santa Monica Blvd., turns west on Santa Monica Blvd. to Caheuenga Blvd, and then continues north to the 101 Freeway. The eruv boundary continues northwest on the south side of the 101 Freeway to the 405 Freeway, continues south on the east side of the 405 Freeway to the 10 Freeway, and continues east on the north side of the 10 Freeway to Western Avenue. The exact path is subject to change as we continually adjust to construction projects and other issues.



www.laeruv.com

info@laeruv.com

By the Community, For the Community.

USING AN ERUV

Many people make the mistake of assuming that an eruv creates permission to carry any object on Shabbos. An eruv is not a legal fiction, nor is it a workaround to allow the performance of the otherwise forbidden malacha of "Carrying". The concept of eruv is part and parcel of the halachos of Shabbos, and permits carrying only within narrow constraints.

Common articles that are permitted to be used or carried within an eruv on Shabbos include:

- Baby carriages and strollers.
- Canes, walkers and wheelchairs.
- Food, medicine.
- Handkerchiefs, gloves and rain hats, house keys.
- Siddur or sefer.

You should never assume that the eruv is "UP" for Shabbos.

You are required to take personal responsibility to check the eruv status before each Shabbos.

An eruv does not lend permission to carry any "muktzah" article. Some of the more common items that are **not permitted** to be carried include:

- Any item which has no Shabbos functional use such as stones & credit cards.
- Any item of great value which you would be very careful to protect such as passports, checks and other expensive items.
- Any item which cannot be used on Shabbos or whose intended use is for after Shabbos such as car keys or an umbrella.
- Bicycles and roller skates.

The eruv was built to enhance the experience of Shabbos, offering more togetherness, better access to shul, and additional options for the young and elderly. In order to use the eruv properly, we should remind ourselves as to what the Shabbos experience means.

You should never assume that the eruv is "UP" for Shabbos. You are required to take personal responsibility to check the eruv status before each Shabbos. You can check the **LAERUV.com** website, call **877-Eruv-Info**, signup for the **email** blast, join our **WhatsApp** group, check **Facebook** or **Twitter**, or call a friend.

An eruv is a true blessing, and even a necessity for a community, but it shouldn't be treated lightly or lead you to forget that it is Shabbos. You should discuss with your own Rav the parameters of when and how to use the eruv.



www.laeruv.com

info@laeruv.com

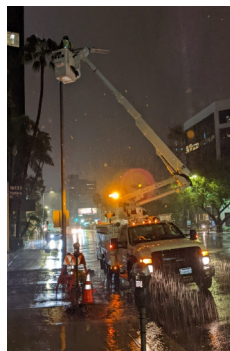
By the Community, For the Community.

CHECKING THE LA ERUV

**Rabbi Pinchas Shedrowitzky, Senior Head Mashgiach
Los Angeles Community Eruv**

Living in a city where there is an eruv you most likely enjoy the luxury of being able to carry on Shabbos wherever you go. You can carry to shul, to a shiur, or when visiting a friend. Parents enjoy wheeling a baby stroller, families can push a wheelchair, and much more.

Many people, after being able to carry on Shabbos this way for some time, get used to having an eruv. They assume that it is always kosher, and don't think twice before carrying publicly on Shabbos. It is actually for this reason that some Gedolim were opposed to building an eruv in a city. Once people get so accustomed to spending Shabbos in an eruv, they don't realize that in reality it is prohibited to carry in public on Shabbos, and that it is the eruv that allows public carrying. Later, when they may occasionally visit a city without an eruv, they don't realize that it is forbidden to carry in that city. Most times, community members don't realize what it takes behind the scenes to get the eruv up and kosher for use each Shabbos.



Our LA Eruv is surrounded by walls on three and a half sides, while much of the eastern border - from the Hollywood Bowl to the Santa Monica Freeway - is created by a series of *tzuras hapesach* - "doorways". A *tzuras hapesach* (tz"h) is what people commonly view as an eruv. It is a line that strings from pole to pole thereby forming a shape of a doorway.

The doorways are created by connecting 200 pound test mono-filament line from pole top to pole top. There are hundreds of segments of line where our eruv crosses over streets, off-ramps, on-ramps, stairways, alleys, etc. around the city, tying our solid wall segments together into a single continuous boundary around the community.

These tz"h must be checked to assure that they are attached and intact. Even an eruv that has a history of

Many people get used to having an eruv. They assume that it is always kosher, and don't think twice before carrying publicly on Shabbos. It is actually for this reason that some Gedolim were opposed to building an eruv in a city.



www.laeruv.com

info@laeruv.com

By the Community, For the Community.

CHECKING THE LA ERUV, continued

rarely breaking ideally should be checked before each Shabbos.

The LA Eruv has a crew of mashgichim who check the eruv weekly without fail. Since it is a big eruv (over 45 mile circumference), it is divided and checked in two parts, the north and south parts (divided by Santa Monica Boulevard).

Every Thursday our mashgichim check the LA Eruv. In fact, they check all the eruv lines of the tz"ח weekly.

Besides confirming that the lines are there and intact, they also make sure that the lines are positioned correctly in a kosher way. Our *mashgichim* are *Kollel avreichim* and *talmidei chachamim* trained in the practical details of eruv construction and maintenance and are deeply familiar with the relevant *halachos*.



When checking the LA Eruv, here are a few of the things they look for: The line that runs from pole to pole to create a tz"ח must be attached to the top of the pole and cannot be attached to the side of the pole. If it's attached to the side it is *pasul* - invalid. Also, the lines can never be allowed to stretch and sag. Further, the lines can never rub up against another pole or line or branch that will bend the line away from its required straight span.

Even when a line was initially installed correctly, it can be moved or damaged by a different company. The electric company, the bureau of street lighting, a cable company, or a cell phone provider may do work on or near a pole and need to move the eruv line while working. Often, intending to do the correct thing, they'll retie the line after they finish their work. However, not realizing that the line was purposely tied to the top of the pole, they'll retie it to the side, thereby invalidating it.

***Our mashgichim are
Kollel avreichim and
talmidei chachamim trained
in the practical details of
eruv constructions and
maintenance and are deeply
familiar with the relevant
halachos.***



www.laeruv.com

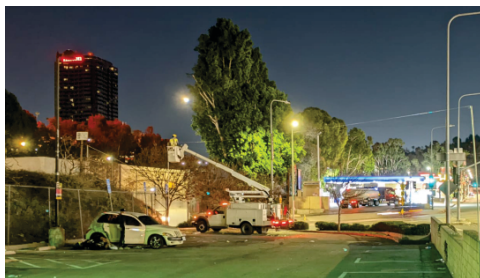
info@laeruv.com

By the Community, For the Community.

CHECKING THE LA ERUV, continued

The mashgiach also ensures that there shouldn't be tree branches close to the lines, since they can invalidate the line by either tearing it or hitting and bending it. We are very makpid – careful -- that our lines always run clear.

Besides the weekly checking of all the *tz"h* lines, there is another crew that checks the *mechitzos* - the walls of the LA Eruv that surround and enclose the entire area. Most of the *mechitzos* are walls and fences that are built alongside the freeways surrounding the city. Some of them are made of cinder-blocks while the rest are chain link or wrought iron fencing.



Since the *mechitzos* are less likely to break, they are checked less frequently. Still, they are checked a few times a year. This is done by the *mashgichim* who walk the entire perimeter for miles, confirming that there are no breaks. They are looking for gaps that would invalidate the LA Eruv. In some locations (e.g., in the midst of a straight continuous wall), a gap of up to ten *amos* is acceptable; in other *mechitzos* a break of even a few *tefachim* - approximately 10-12 inches -- invalidates the eruv. In all cases, the LA Eruv *mashgichim* work with the most stringent definitions and requirements. For example, when a fence turns and changes the angle that it was previously running, a breach of more than a few inches would invalidate the eruv.

In all cases, the LA Eruv mashgichim work with the most stringent definitions and requirements.

Any *mechitza* that is raised from the ground more than three *tefachim* is considered, in *halacha*, to be non-existent. Therefore, our *mashgichim* make sure that the fences are not bent or raised off the ground.

Walking alongside a freeway fence can at times be very difficult to check because often there is brush growth that can make it hard to see the actual fences. It especially gets hard to check the lower part of the fence to ensure that it's intact at the lowest few inches. Nonetheless, the *mashgichim* are out every week walking miles of perimeter, scuffling up hillsides, fighting through bushes, navigating homeless encampments, and diligently inspecting the full LA Eruv, section by section. When they complete a circuit, they start again. This happens week by week, year by year.



www.laeruv.com

info@laeruv.com

By the Community, For the Community.

CHECKING THE LA ERUV, continued

After the *mashgichim* perform their weekly check, they report to the head *mashgiach* if anything is broken or problematic. He, in turn, reports these issues to the crew that does the repairs.

A few years ago, the LA Eruv acquired its own truck and trained the crews to thoroughly fulfill the relevant *halachos*. It is critical to have a frum shomer Shabbos crew that is dedicated to always doing things the proper way, not the easy way. The repair crew takes out the truck on Thursday nights and makes any repairs required that week.

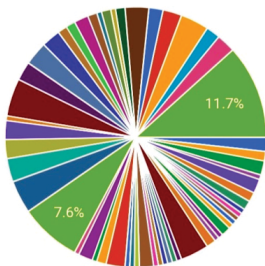


At times, the repair list can have six or seven items. Since the LA Eruv perimeter is so big, sometimes the spots that need fixing can be miles from each other. For example, there might be one or two fixes on Western Avenue, others in the Valley near the 101 Freeway, and more along the 405 Freeway near Bel Air. The crew is often out for many hours and generally work deep into the night. After the crew completes repairs on Thursday night, they notify the head *mashgiach* and review all the items on the list to make sure all were addressed and fixed correctly.

Only then is our LA Eruv verified as being up for Shabbos.

It is critical to have a frum shomer Shabbos crew that is dedicated to always doing things the proper way, not the easy way.

LA Eruv Repairs by Location



LA Eruv Repairs by Type



www.laeruv.com

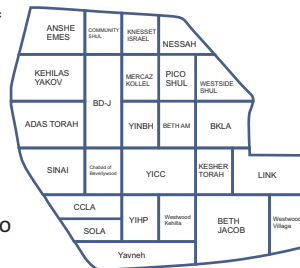
info@laeruv.com

By the Community, For the Community.

Shul Partners

Adas Torah *
Beis Knesses of Los Angeles
B'nai David-Judea Cong. *
Chabad of Beverlywood
Community Shul *
Kehillat & Yeshivat Yavneh *
LINK Kollel & Shul *
Beth Am *
Westwood Kehilla *
Young Israel of Century City *
Young Israel of North Beverly Hills *

Anshe Emes Synagogue *
Beth Jacob Cong. *
CCLA
Chabad of SOLA
Sinai
Cong. Kehilas Yaakov *
Kollel Merkaz HaTorah
Pico Shul – Tiferes Shlomo
The Westside Shul
Westwood Village Synagogue *
Young Israel of Hancock Park *



* Contributes through dues or direct funding

Builders & Pillars

We thank the more than 300 families who contributed to the LA Eruv last year (especially those who gave monthly automatic donations) including the following:

Abraham	Benyowitz	Celnik	Fenig	Gorman
Abramowitz	Berger	Cofsky	Fenigstein	Govlich
Acosta	Berlin	Cohen	Finkelstein	Grabie
Adison	Berman	Cooper	Fisch	Gradon
Adler	Bezdrovny	Daneshrad	Fishman	Grawitzky
Agress	Bina	Davis	Fleischmann	Greenbaum
Akhamzadeh	Biron	Denbo	Flores	Greenberg
Alyeshmerni	Blaker	Diamond	Forer	Greenstein
Amiri	Blauner	Drizin	Frankel	Gross
Amster	Blitzstein	Eisenberg	Fried	Gruen
Anziska	Blumofe	Elterman	Friedman	Gruenbaum
Astrof	Bodumin	Engel	Fusion	Grunfeld
Atlas	Bonert	Etshalom	Geiger	Hahn
Aufrichtig	Bornstein	Ettlinger	Ghods	Haller
Bader	Broner	Evensky	Glazer	Halwani
Baitelman	Brown	Faber	Gofman	Hanasabzadeh
Barkhordar	Brull	Fain	Goldberg	Hantman
Baum	Buchman	Fauman	Golderg	Haridim
Beltran	Burg	Favian	Goldin	Hecht
Bemel	Casper	Fax	Goldman	Heller
Benchimol	Castell de Oro	Faynerman	Goldstein	Hendeles
Benjamin	Cavalier	Feldman	Gordon	Henkin



www.laeruv.com

info@laeruv.com

By the Community, For the Community.

Builders & Pillars, continued

Hepner	Lebovics	Nitzani	Schuman	Teller	Zilkha
Hirschmann	Lee	Normand	Sedighpour	Tendler	Zirdok
Hoffman	Lent	Novak	Segura	Thompson	Zutler
Hofstatter	Lerer	Ohsie	Seidler-Feller	Topiol	
Homami	Lester	Olkha	Shahrouz	Trapp	
Huttler	Leventhal	Pariser	Shallman	Tsitsuashvili	
Ilitis	Levin	Partush	Shanblatt	Turk	
Inselmann	Levine	Pesso	Shapiro	Twersky	
Isaacs	Lewis	Piliavin	Shenker	Union	
Iserberg	Light	Pollack	Sher	Uretsky	
Ives	Lisker	Prince	Shink	Wachtel	
Jacobs	Litenatsky	Quinn	Shofet	Waghalter	
Jacobson	Litvak	Rauch	Shvartsman	Weber	
Jaeger	Loewenstein	Rbibo	Shwartz	Weinberg	
Jakubovitz	Magid	Reichman	Siegal	Weiner	
JDM Funding	Mahpour	Richards	Silverman	Weinman	
Johnson	Malk	Richeimer	Silverstein	Weinstein	
Kahn	Mankowitz	Rohatiner	Simon	Weiskopf	
Kanefsky	Mann	Romm	Simpson	Weiss	
Kapenstein	Marciano	Rosen	Smith	Weissman	
Kaplan	Margules	Rosenbaum	Sobel	Wertheimer	
Karesky	Mark	Rosenberg	Socher	Western Institute	
Katyal	Markman	Rosenblatt	Soussana	Weyuker	
Katz	Marmon	Rosenthal	Spinrad	Wiener	
Katzovitz	Mayesh	Ross	Stauber	Wilk	
Kaufmann	Meier	Rothman	Stein	Williams	
Keiter	Melmed	Rothstein	Stern	Willner	
Kest	Menlo	Roz	Stewart	Winkler	
Kirschenbaum	Menter	Rubin	Stohl	Wintner	
Kishineff	Merewitz	Ryzman	Stolz	Wisnicki	
Klein	Miller	Sacks	Storch	Witkin	
Kleinman	Milstein	Saks	Stuhl	Wolmark	
Kohanoff	Mindle	Saltiel	Stul	Wurzbarger	
Kopple	Modlinger	Samson	Subar	Yellen	
Korobkin	Mollaei	Sanders	Sufrin	Yellin	
Kramer	Montag	Scheinfeld	Sullivan	Zakowski	
Krell	Morris	Schiffman	Tabacznik	Zargari	
Krich	Muskin	Schluskel	Tabaroki	Zeitlin	
Krief	Nagel	Schmeidler	Tabrikian	Zelkha	
Krombach	Newman	Schneider	Tamir	Zeltzer	
Landa	Nissimtlar	Schoenfeld	Teichman	Zemel	

Sign up for a monthly support of the eruv at: www.laeruv.com/donate



www.laeruv.com

info@laeruv.com



P.O. Box 351360

Los Angeles, CA 90035

www.laeruv.com/donate

www.laeruv.com